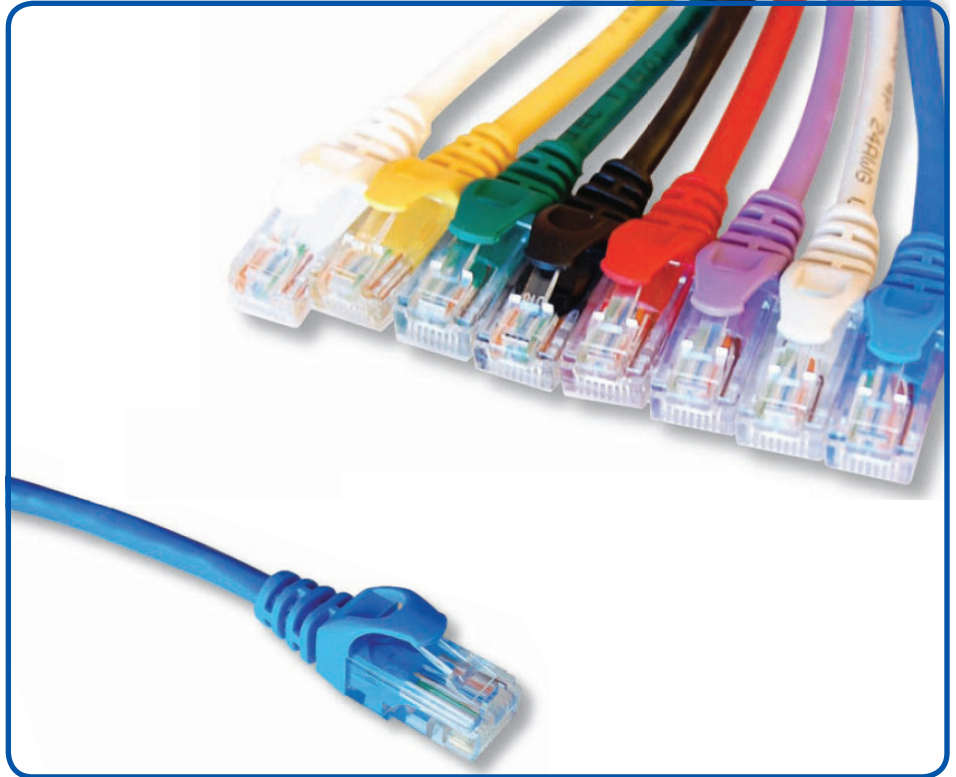


### Applications

- Multimedia Connections
- Patch panel connections
- Consolidation point connections
- Telecommunication outlet connections

### Features and Benefits

- Product channel tested to ANSI/TIA-568
- Sequential length markers on cable in feet
- Quick delivery
- Stranded conductors for cable flexibility and ease of installation
- Over molded strain relief boot
- Connector's pins Gold plated 50U" over 100U" Nickel
- Offered in 9 colors: grey, blue, white, green, yellow, black, red, purple, and orange
- CAT5E tested up to 350 MHz  
CAT6 tested up to 550 MHz



### Description

Wirewerks CAT5E and CAT6 UTP C.2 category 5E or 6 and ISO 11801 patch cords are the ideal connectivity products for all your price conscious second edition class D or E channel requirements.

We also offer crossover patch cords in A to B or gigabit T568B

Their distinctive over molded boots exhibit an improved strain relief and configuration. The patch cords are an easy-to-press releasing tab. wired to be compatible with both

All patch cords meet TIA/EIA 568- T568A and T568B wiring schemes.

### Ordering information

CAT -     A   -

#### YY - Performance

5E = CAT5e  
06 = CAT6

#### NN - Color

GY = Grey      GR = Green  
BL = Blue      YL = Yellow  
BK = Black     RD = Red  
OG = Orange   PR = Purple  
WH = White

#### XXX - Length in Feet

001 = 1ft    010 = 10ft  
002 = 2ft    012 = 12ft  
003 = 3ft    015 = 15ft  
004 = 4ft    020 = 20ft  
005 = 5ft    025 = 25ft  
006 = 6ft    050 = 50ft  
007 = 7ft    100 = 100ft

### Crossover patch cords

CAT -     A   -

#### YY - Performance

5C = CAT5e gigabit T568B crossover  
5X = CAT5e A to B crossover  
6C = CAT6 gigabit 568B crossover  
6X = CAT6 A to B crossover

#### NN - Color

YL = Yellow  
RD = Red

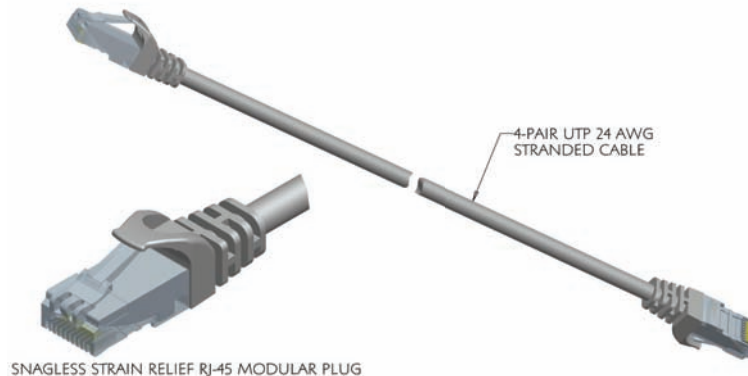
#### XXX - Length in Feet

001 = 1ft    007 = 7ft  
003 = 3ft    010 = 10ft  
005 = 5ft    015 = 15ft

### Technical Specifications

#### Mechanical Characteristics

Parameter	Value
Operating Temperature	-20°C ~ 60°C
Storage Temperature	-40°C ~ 60°C
Cable Core	4 twisted pair
Conductor	Stranded 24AWG bare copper
Insulation	Polyolefin compound
Jacket	Polyvinyl Chloride (PVC) CM
Strain Relief Boot	Polyvinyl Chloride (PVC)
Plug	8 position RJ-45 modular plug /contacts plated with 50 microinches of gold



### Certification and Compliance

RoHS	Compliant to the directive on Restriction of Hazardous Substances
FCC 47, Part 68	Connection of Terminal Equipment to the Public Switched Telephone Network
UL 94	Tests for Flammability of Plastic Materials for Parts in Devices and Appliances
cUL	Listed Communication Circuit Accessories