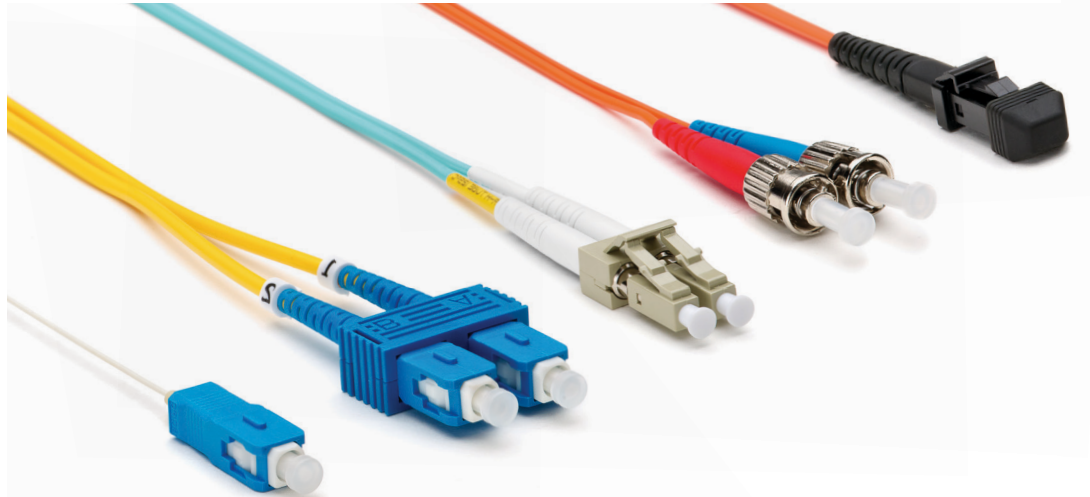


EE Connector side B	LC	SC	ST	FC	MT	MB	S5
	LC	SC	ST	FC	MTRJ Female	MTRJ male	SMA905
	S6	E2	ES	FD	D4	MU	OE
	SMA906	E2000	ESCON	FDDI	D4	MU	Pigtail
	LU	LF	LS	LM	SF	SS	
	LC uniboot	LC flexible boot	LC short boot	Mini LC	SC flexible boot	SC short boot	
F Polish side B	A		B		C		D
	APC		UPC		PC (multimode)		N/A

NNN
Length in meters*

*If a decimal is required, add "D00" right after the nondecimal value and without leaving any space between. The "00" in "D00" must be replaced by the desired value. Example: an assembly with an overall length of 105.55 meters shall read as 105D55.



Packaging

Description

Clear poly bag, 1 unit per bag.

Physical Characteristics

Parameter	Value
LC, SC, MTRJ housing material	UL 94V-0 ABS high-impact thermoplastic
ST, FC housing material	Nickel-brass
Connector ferrule material	Zirconia ceramic
MTRJ ferrule material	Composite

Mechanical Characteristics

Parameter	Value
Operating Temperature	-20° C (-4° F) ~ 60° C (140° F)
Storage Temperature	-40° C (-40° F) ~ 60° C (140° F)

Optical Characteristics

Parameter	Value	
Insertion Loss	Single mode UPC	≤0.30 dB
	Single mode APC	≤0.30 dB
	Multimode PC	≤0.30 dB
Return Loss	UPC	≤-55 dB
	APC	≤-65 dB